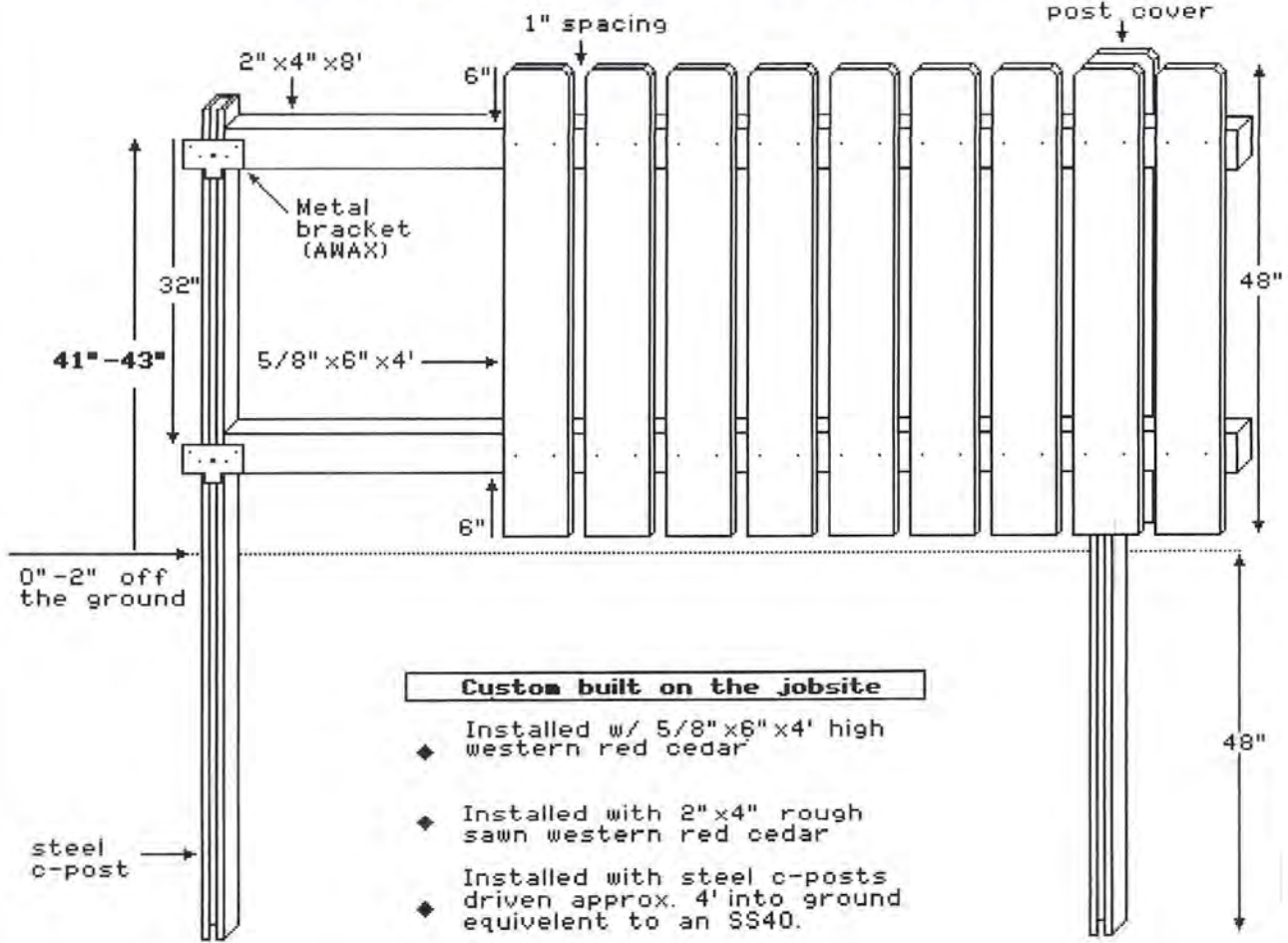


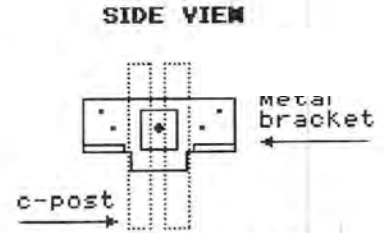
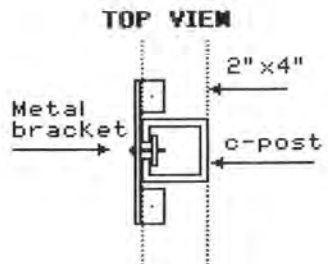
# EXHIBIT E-1

## 4' HIGH 1" SPACED 1" X 6" DOG-EARED FENCE USING WESTERN RED CEDAR



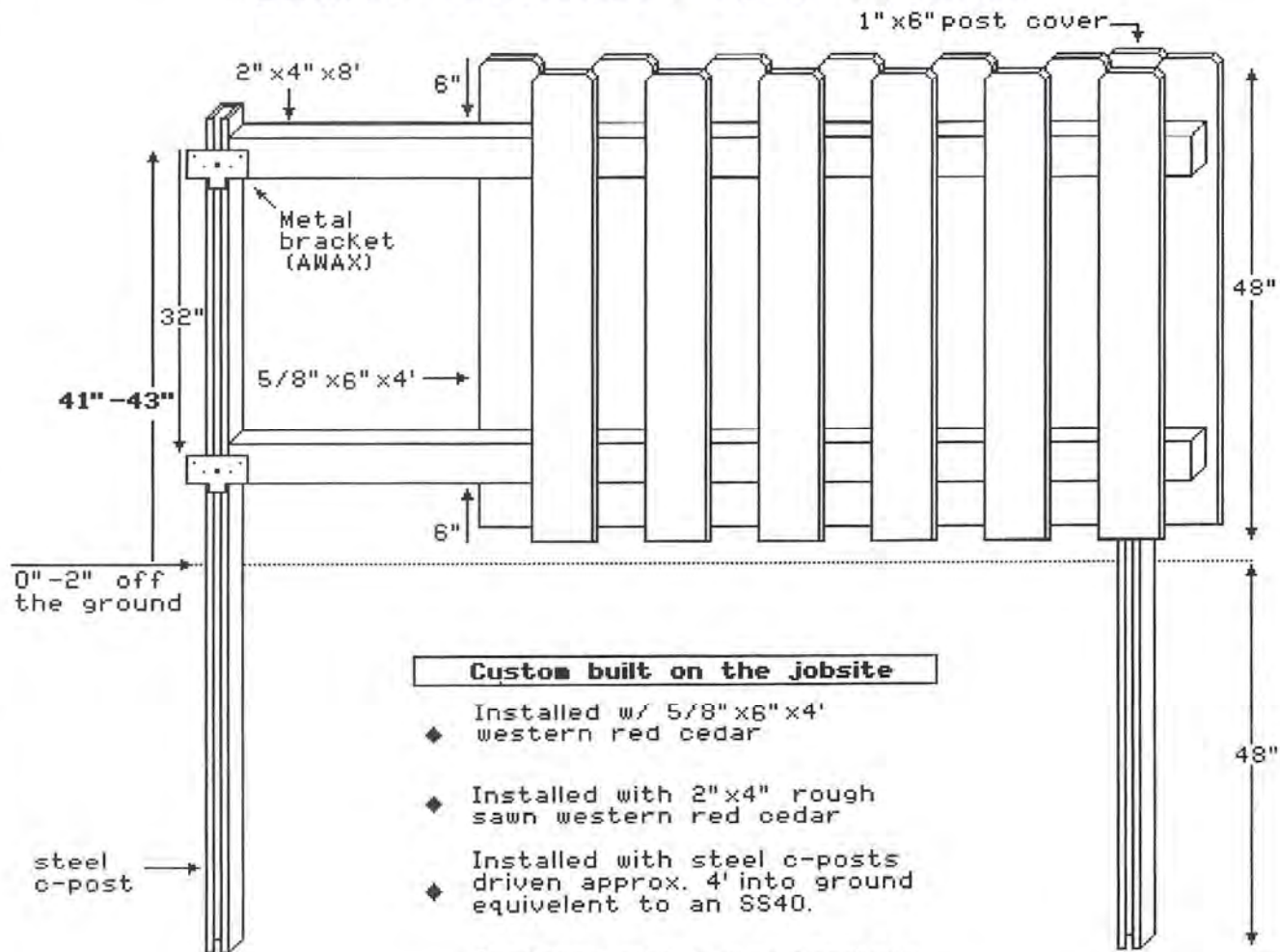
**Custom built on the jobsite**

- ◆ Installed w/ 5/8" x 6" x 4' high western red cedar
- ◆ Installed with 2" x 4" rough sawn western red cedar
- ◆ Installed with steel c-posts driven approx. 4' into ground equivalent to an SS40.
- ◆ Installed with metal brackets (awax) that attach to post and screw into stringers
- ◆ Decorative Maxima hinges and lockable Maxima latches



## EXHIBIT E-2

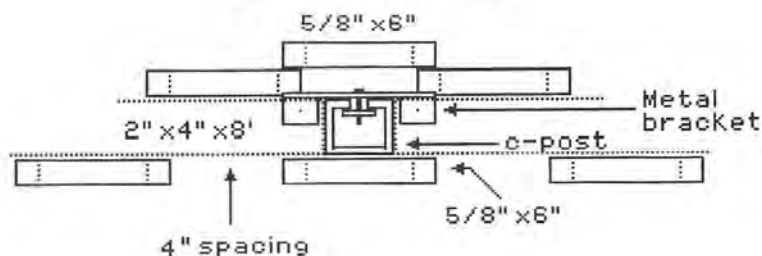
### 4' HIGH WOOD BOARD ON BOARD DOG-EARED USING WESTERN RED CEDAR



#### Custom built on the jobsite

- ◆ Installed w/ 5/8" x 6" x 4' western red cedar
- ◆ Installed with 2" x 4" rough sawn western red cedar
- ◆ Installed with steel c-posts driven approx. 4' into ground equivalent to an SS40.
- ◆ Installed with metal brackets (awax) that attach to post and screw into stringers
- ◆ Decorative Maxima hinges and lockable Maxima latches

#### TOP VIEW



#### SIDE VIEW

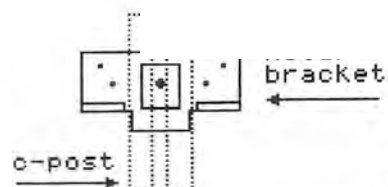
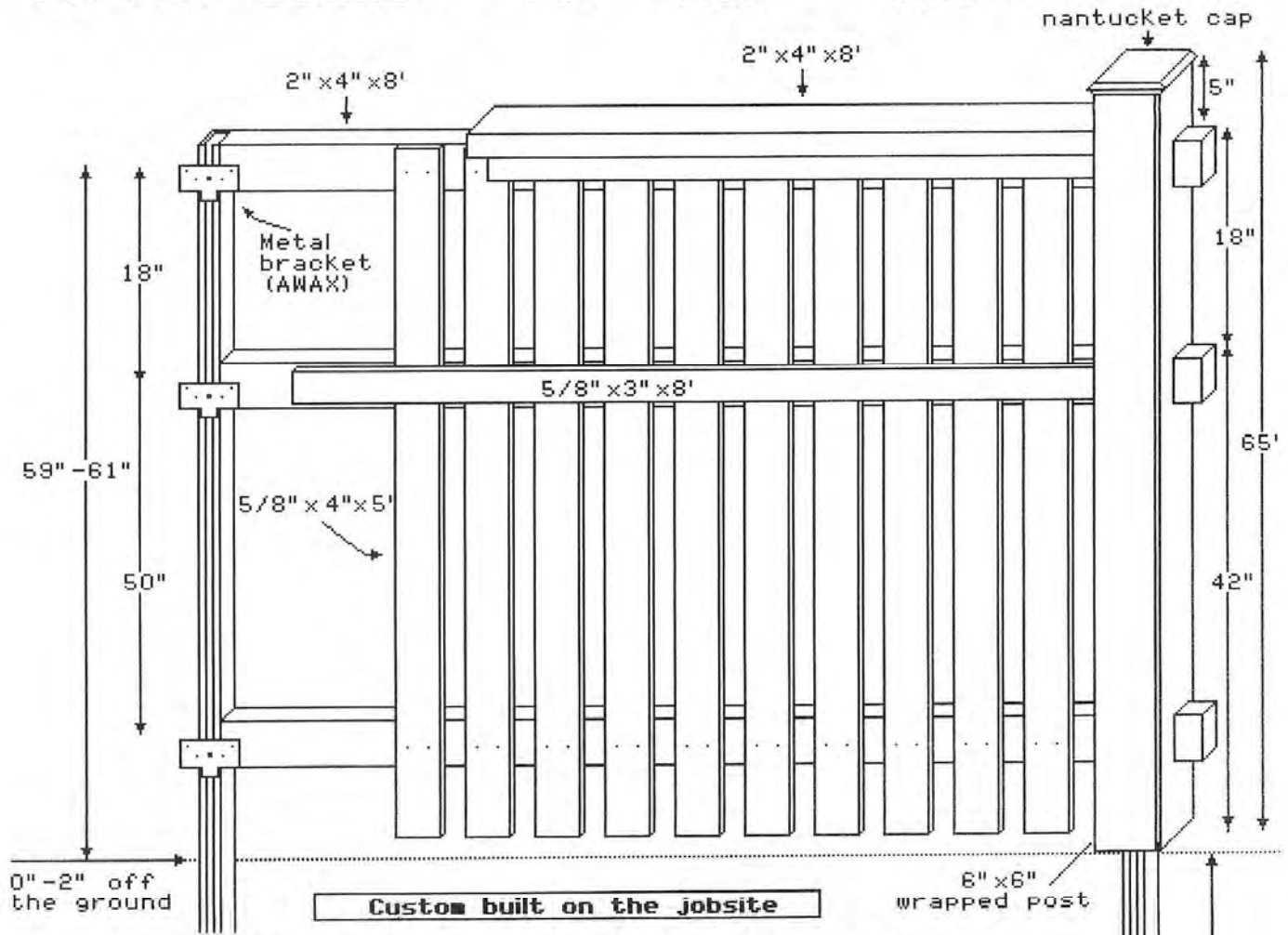


Exhibit E2

## EXHIBIT E-3 / Type II Board

### 5' HIGH 1X4 PICKET WITH A 2" SPACE W/ WRAPPED POSTS AND NANTUCKET CAPS TOPPER BOARD - TOP TRIM - MIDDLE TRIM



◆ Installed w/ 5/8" x 4" x 5' 5/8" x 6" x 5' & 5/8" x 3" x 8' western red cedar.

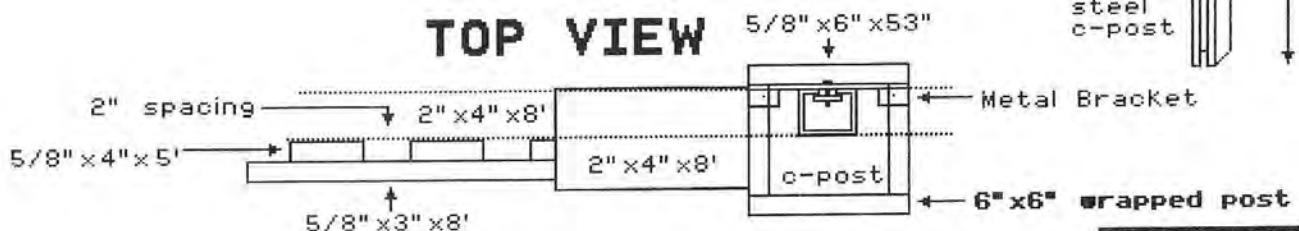
◆ Installed with 2" x 4" rough sawn western red cedar

◆ Installed with steel c-posts driven approx. 4' into ground equivalent to an SS40.

◆ Installed with metal brackets (awax) that attach to post and screw into stringers

◆ Installed with decorative nantucket post caps to fit 6" x 6" wrapped posts.

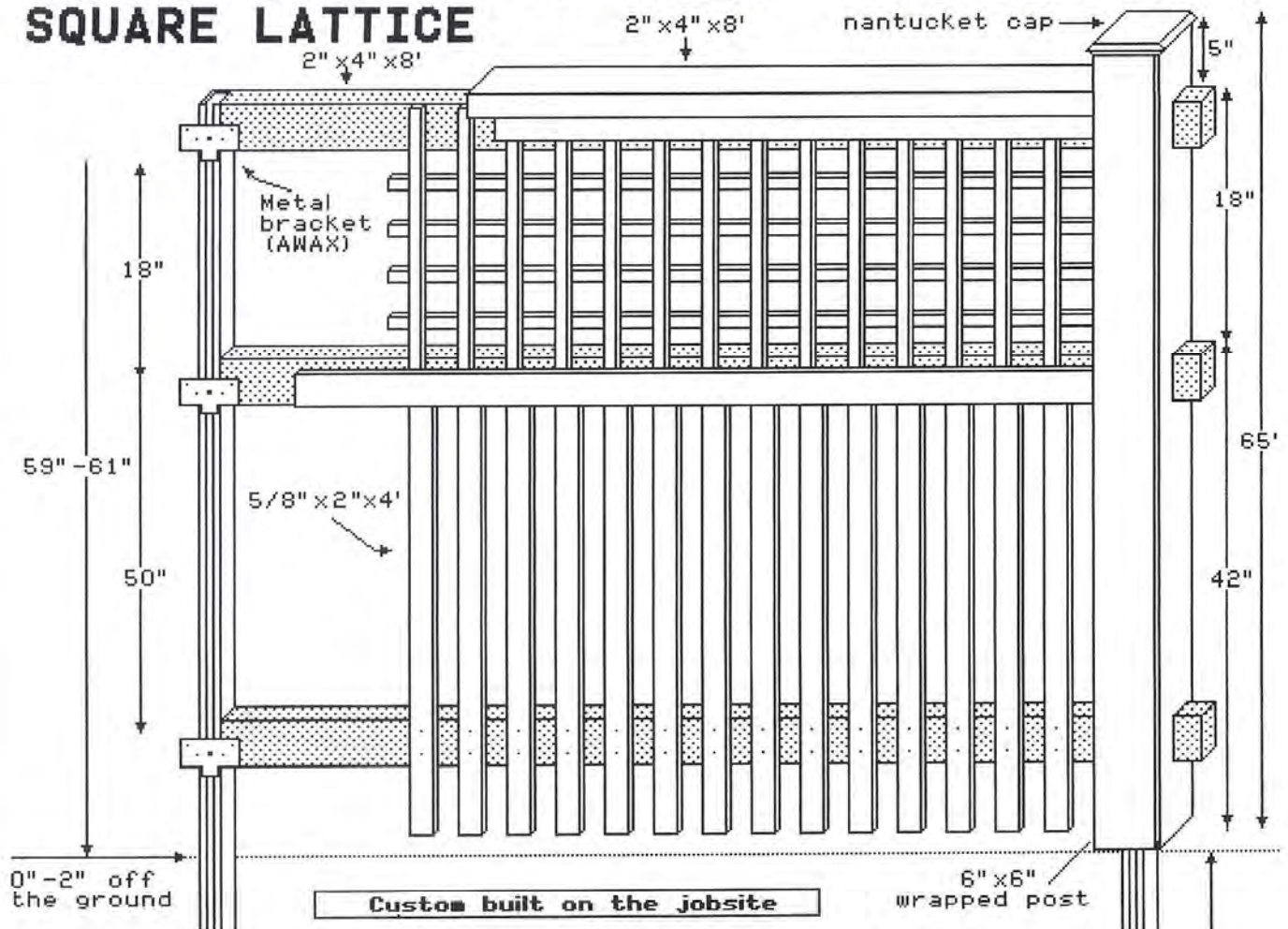
#### TOP VIEW



**TYPE II BOARD**

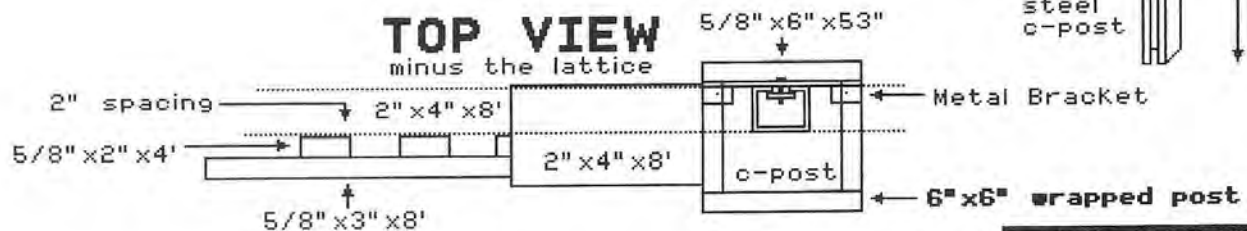
# EXHIBIT E-3 / Type II Picket

## 5' HIGH 1X2 PICKET WITH A 2" SPACE W/ WRAPPED POSTS AND NANTUCKET CAPS TOPPER BOARD - TOP TRIM - MIDDLE TRIM SQUARE LATTICE



- ◆ Installed w/ 5/8" x 2" x 4' 5/8" x 6" x 5' & 5/8" x 3" x 8' western red cedar.
- ◆ Installed with 2" x 4" rough sawn western red cedar
- ◆ Installed with steel c-posts driven approx. 4' into ground equivalent to an SS40.

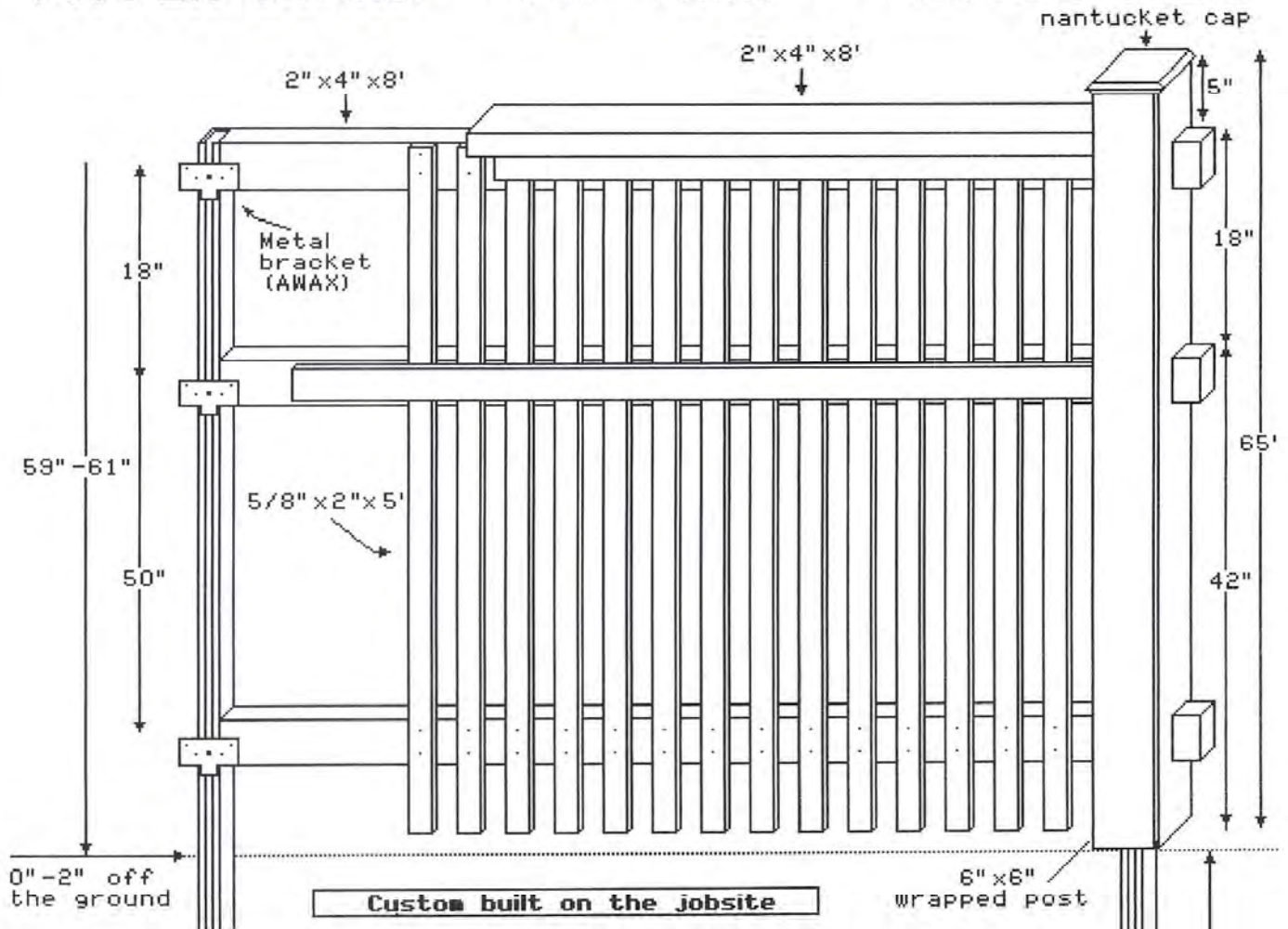
- ◆ Installed with metal brackets (awax) that attach to post and screw into stringers
- ◆ Installed with decorative nantucket post caps to fit 6" x 6" wrapped posts.
- ◆ Lattice will be 1" x 5/8" strips with 2 3/4" squares.



**TYPE II PICKET**

## EXHIBIT E-3 / Type II Rail

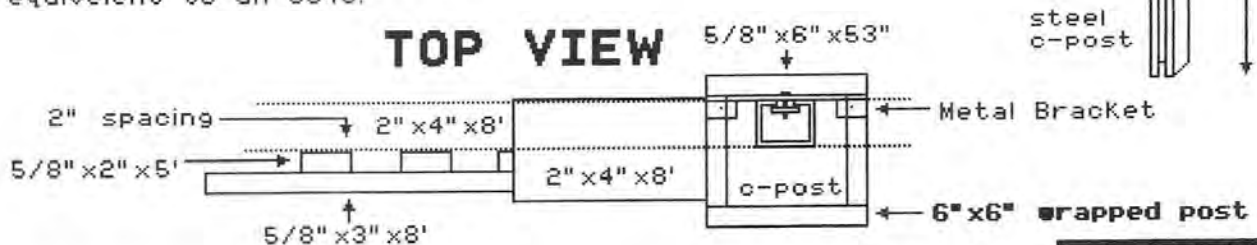
### 5' HIGH 1X2 PICKET WITH A 2" SPACE W/ WRAPPED POSTS AND NANTUCKET CAPS TOPPER BOARD - TOP TRIM - MIDDLE TRIM



- ◆ Installed w/ 5/8" x 2" x 5' 5/8" x 6" x 5' & 5/8" x 3" x 8' western red cedar.
- ◆ Installed with 2" x 4" rough sawn western red cedar
- ◆ Installed with steel c-posts driven approx. 4' into ground equivalent to an SS40.

- ◆ Installed with metal brackets (AWAX) that attach to post and screw into stringers
- ◆ Installed with decorative nantucket post caps to fit 6" x 6" wrapped posts.

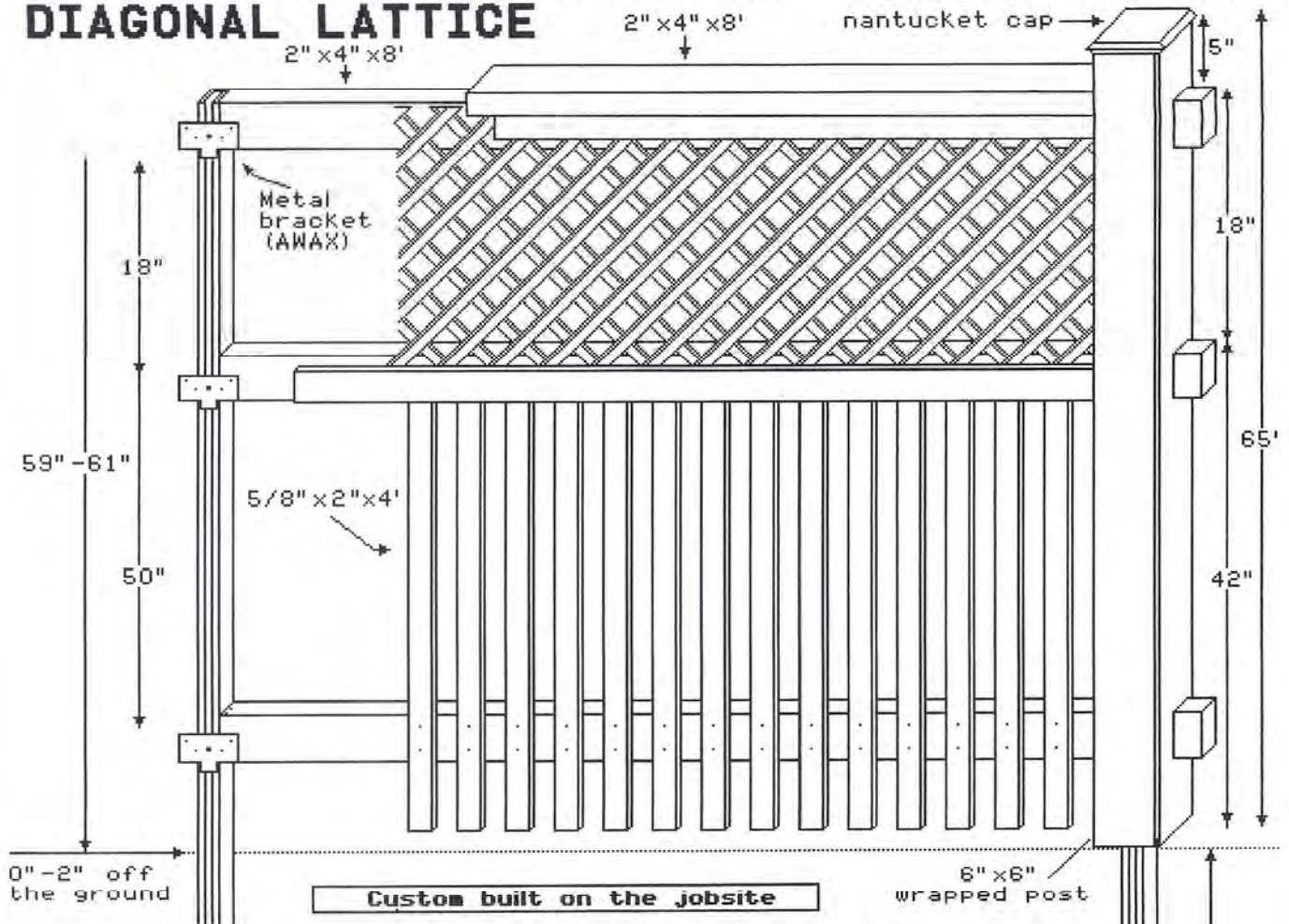
#### TOP VIEW



**TYPE II RAIL**

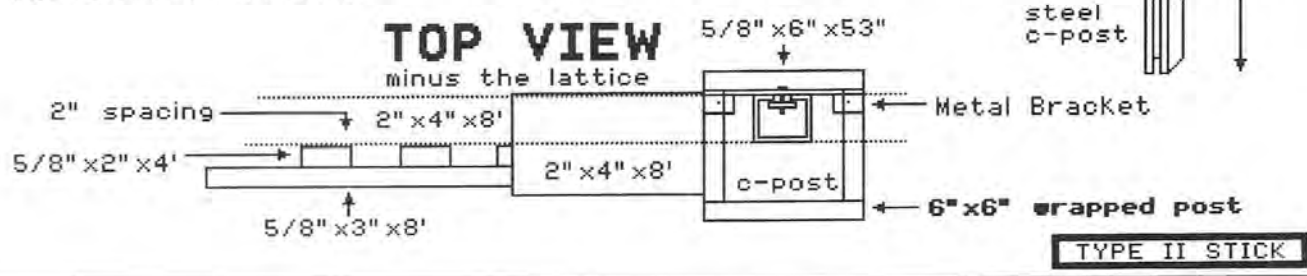
## EXHIBIT E-3 / Type II Stick

**5' HIGH 1X2 PICKET WITH A 2" SPACE  
W/ WRAPPED POSTS AND NANTUCKET CAPS  
TOPPER BOARD - TOP TRIM - MIDDLE TRIM  
DIAGONAL LATTICE**



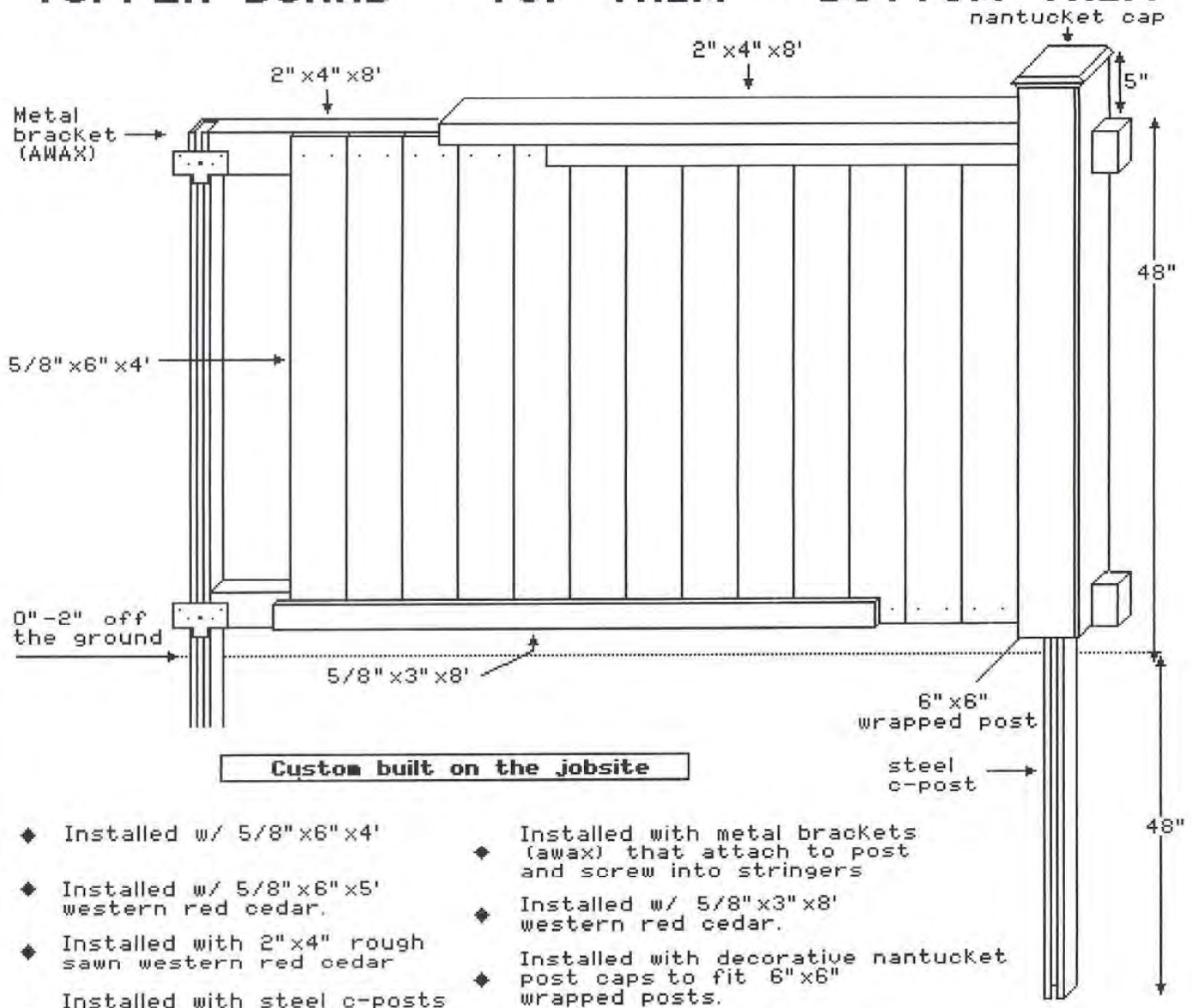
- ◆ Installed w/ 5/8" x 2" x 4' 5/8" x 6" x 5' & 5/8" x 3" x 8' western red cedar.
- ◆ Installed with 2" x 4" rough sawn western red cedar
- ◆ Installed with steel c-posts driven approx. 4' into ground equivalent to an SS40.

- ◆ Installed with metal brackets (awax) that attach to post and screw into stringers
- ◆ Installed with decorative nantucket post caps to fit 6" x 6" wrapped posts.
- ◆ Lattice will be 1 1/2" x 1/4" strips with 2 1/2" squares.



## EXHIBIT E-4

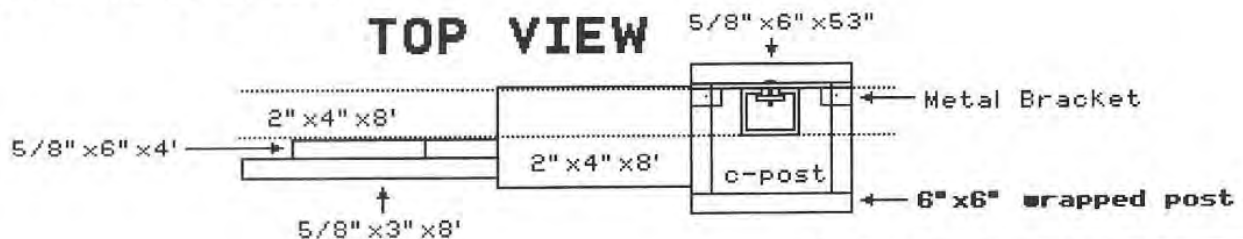
### 4' HIGH SOLID WOOD PRAIRIE 1" X 6" W/ WRAPPED POSTS AND NANTUCKET CAPS TOPPER BOARD - TOP TRIM - BOTTOM TRIM



Custom built on the jobsite

- ◆ Installed w/ 5/8" x 6" x 4'
- ◆ Installed w/ 5/8" x 6" x 5' western red cedar.
- ◆ Installed with 2" x 4" rough sawn western red cedar
- ◆ Installed with steel c-posts driven approx. 4' into ground equivalent to an SS40.
- ◆ Installed with metal brackets (awax) that attach to post and screw into stringers
- ◆ Installed w/ 5/8" x 3" x 8' western red cedar.
- ◆ Installed with decorative nantucket post caps to fit 6" x 6" wrapped posts.

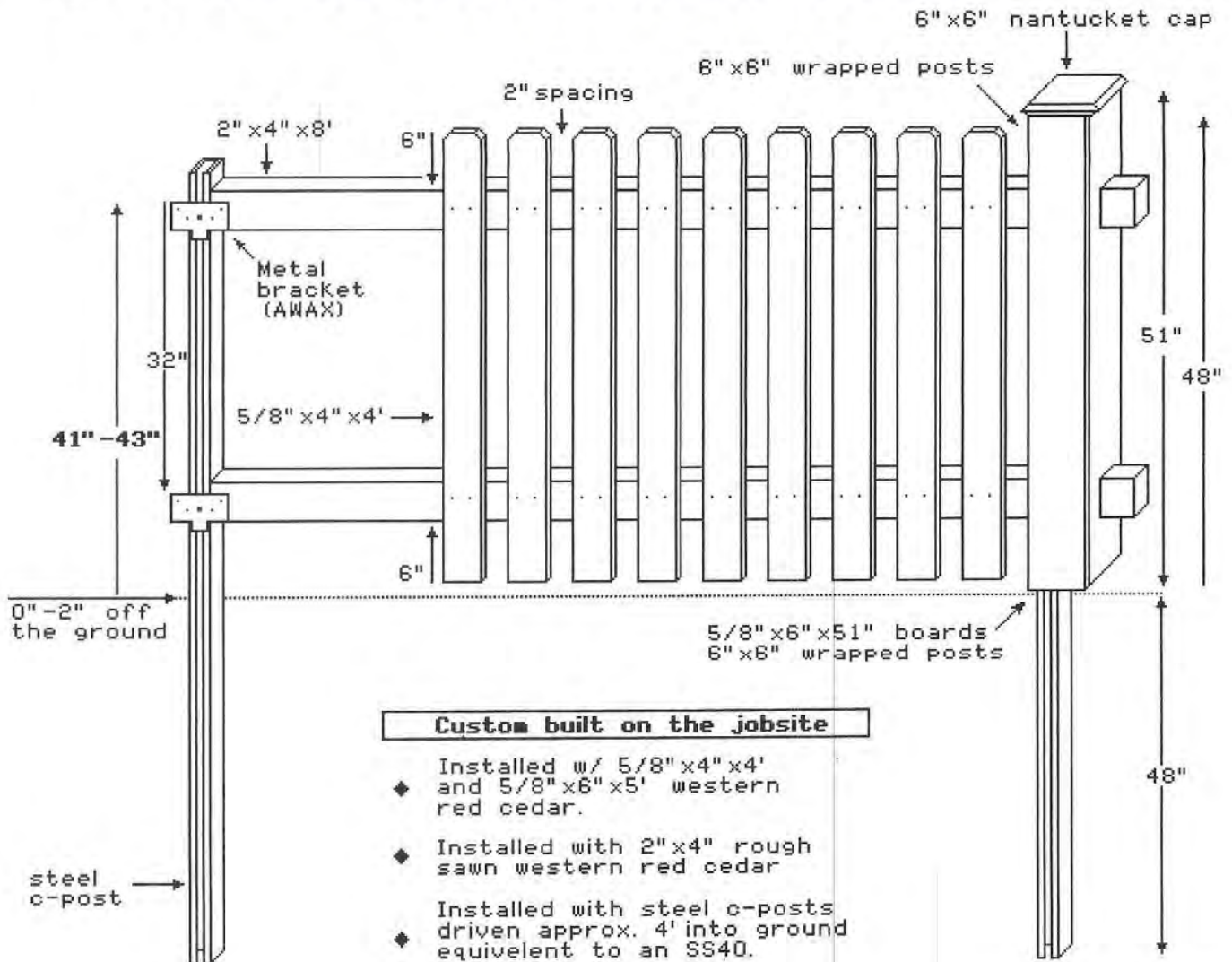
#### TOP VIEW



4' PRAIRIE W/ WRAPPED POSTS

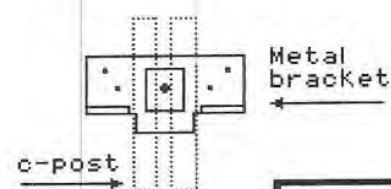
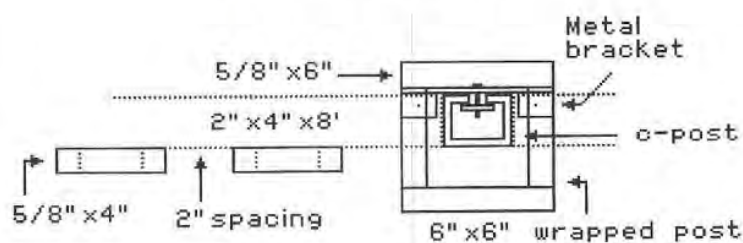
## EXHIBIT E-5 / Type I Board

### 4' HIGH WOOD SPACED PICKET DOG-EARED W/ WRAPPED POSTS AND NANTUCKET CAPS



#### TOP VIEW

#### SIDE VIEW

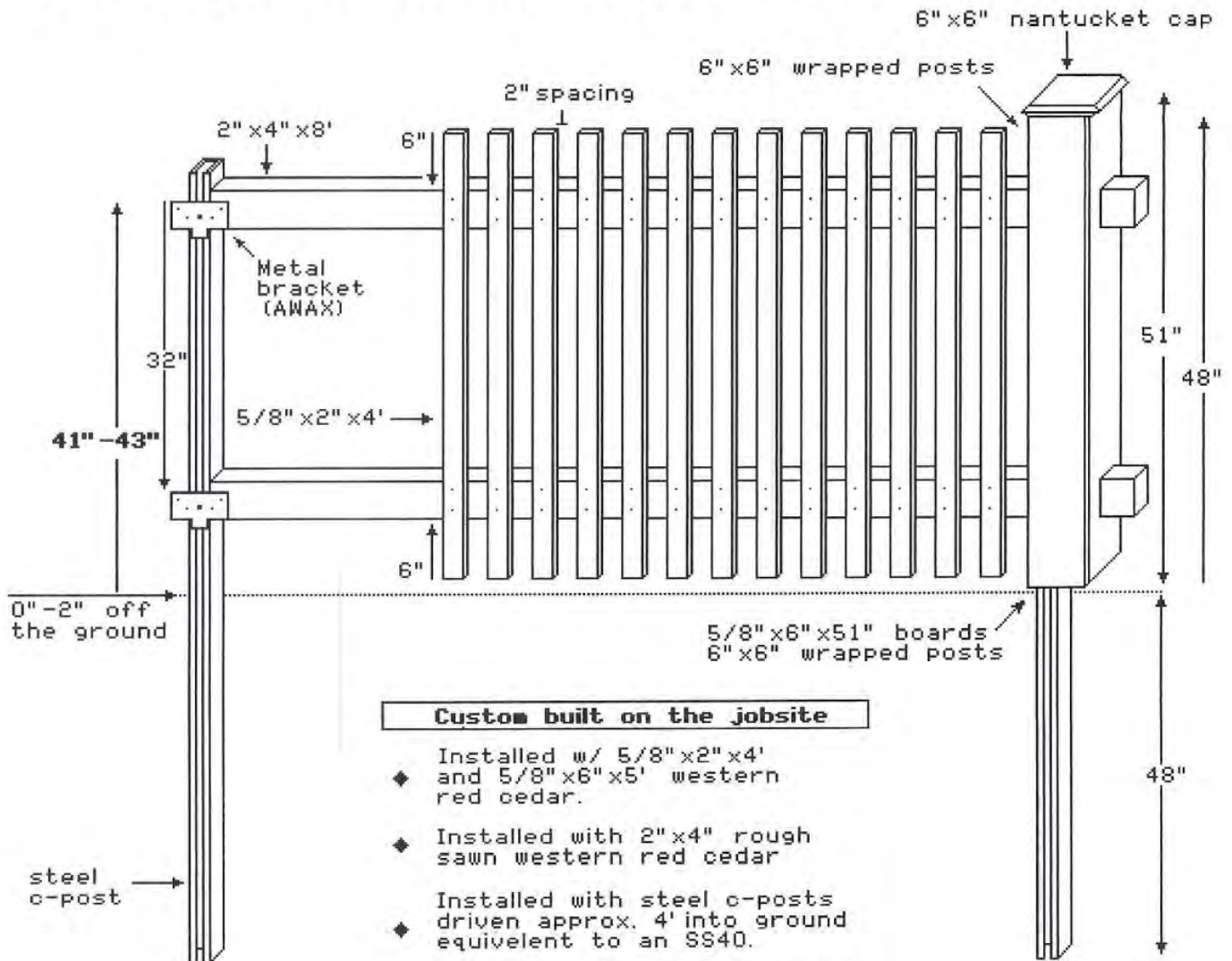


**TYPE 1 BOARD**



## EXHIBIT E-6 / Type I Stick

### 4' WOOD 2" SPACED PICKET 1" X 2" X 4' W/ WRAPPED POSTS AND NANTUCKET CAPS

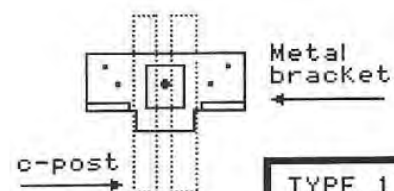
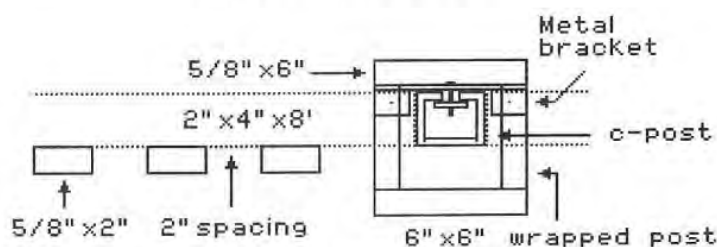


#### Custom built on the jobsite

- ◆ Installed w/ 5/8" x 2" x 4' and 5/8" x 6" x 5' western red cedar.
- ◆ Installed with 2" x 4" rough sawn western red cedar
- ◆ Installed with steel c-posts driven approx. 4' into ground equivalent to an SS40.
- ◆ Installed with metal brackets (awax) that attach to post and screw into stringers
- ◆ Decorative Maxima hinges and lockable Maxima latches

#### TOP VIEW

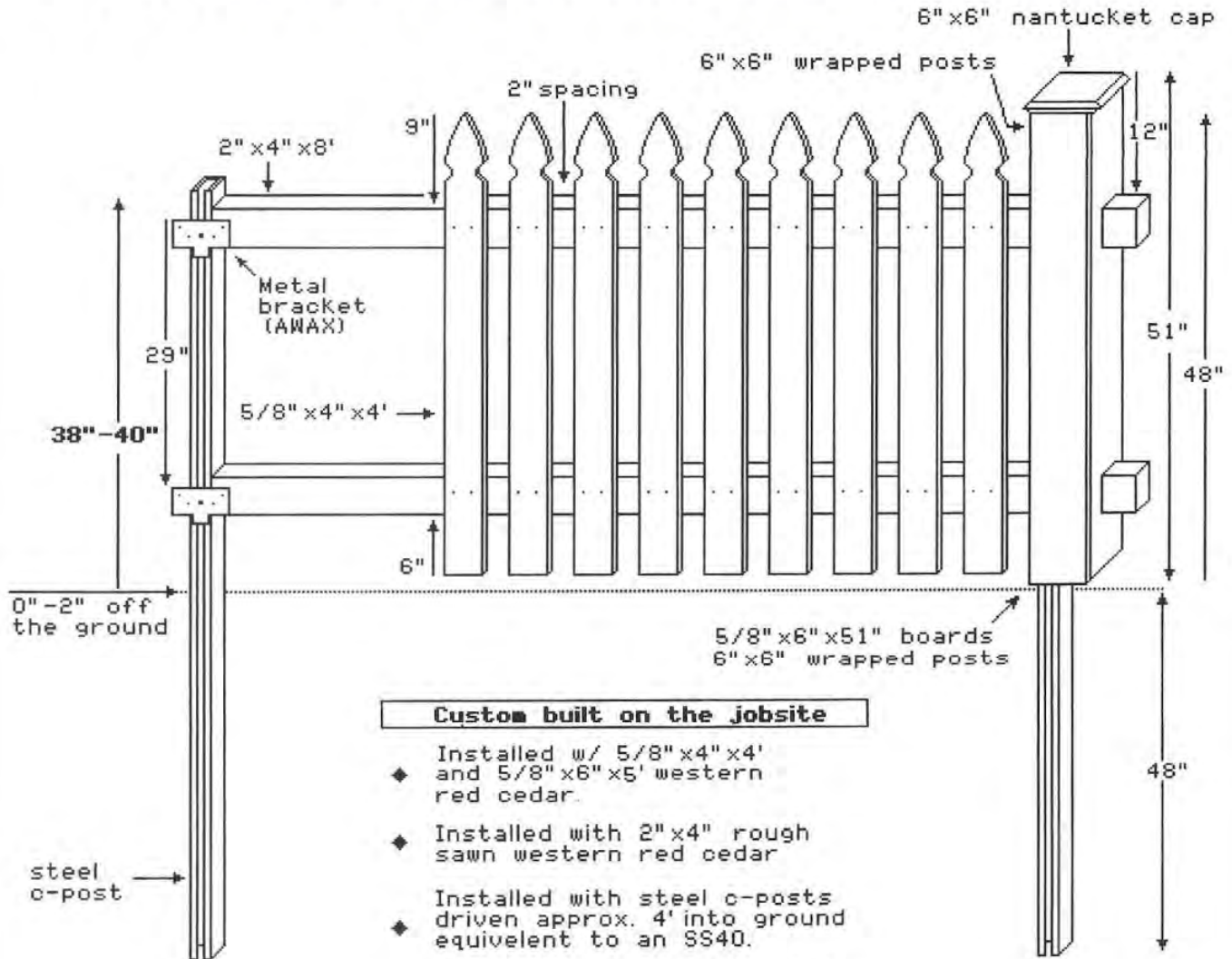
#### SIDE VIEW



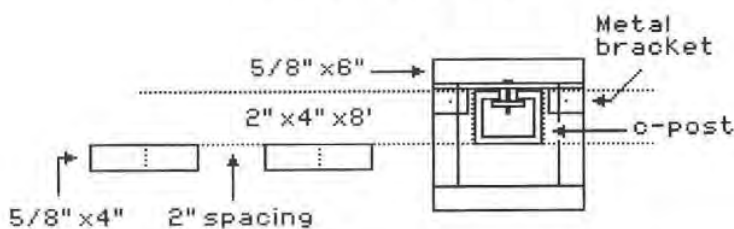
TYPE 1 STICK

## EXHIBIT E-7 / Type I Picket

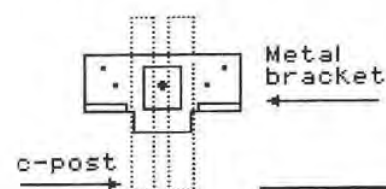
### 4' HIGH WOOD SPACED PICKET FRENCH GOTHIC W/ WRAPPED POSTS AND NANTUCKET CAPS



#### TOP VIEW



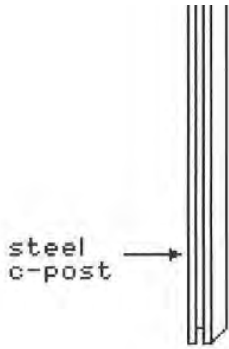
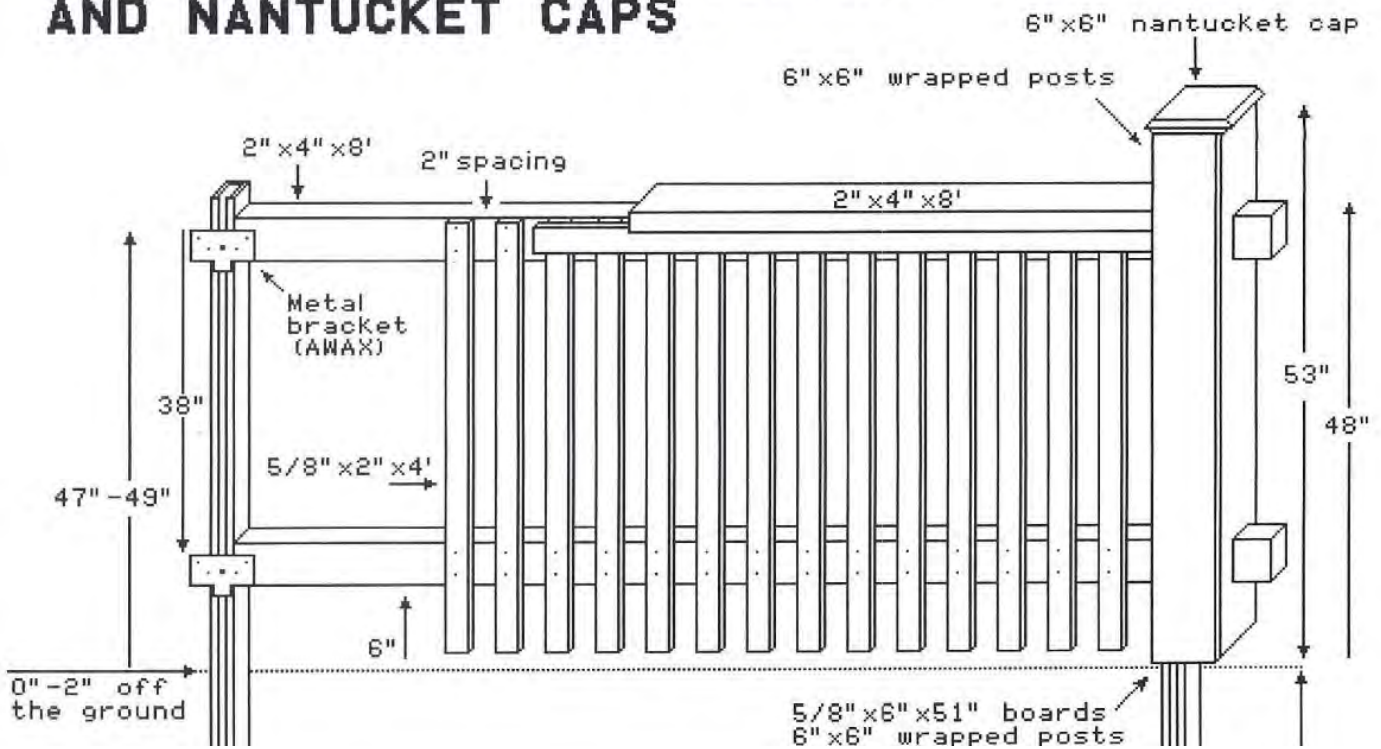
#### SIDE VIEW



**TYPE 1 PICKET**

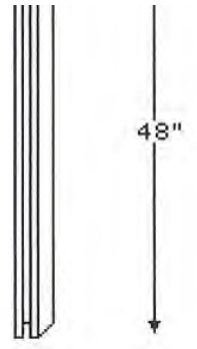
## EXHIBIT E-8 / Type I Rail

### 4' WOOD 2" SPACED PICKET 1" X 2" X 4' W/ WRAPPED POSTS, TOPPER, TOP TRIM AND NANTUCKET CAPS

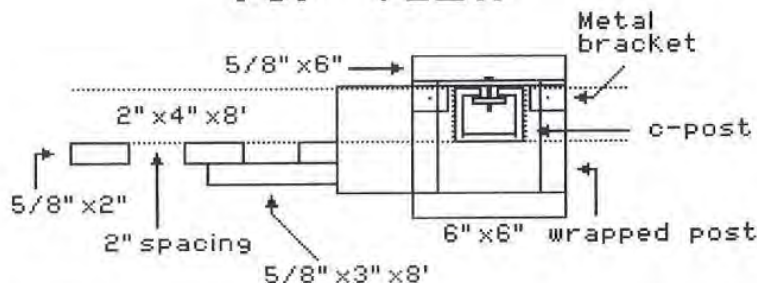


#### Custom built on the jobsite

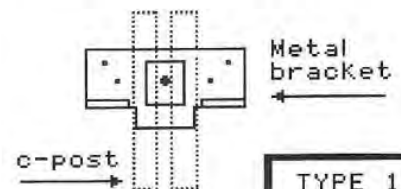
- ◆ Installed w/ 5/8" x 2" x 4' and 5/8" x 6" x 5' western red cedar.
- ◆ Installed with 2" x 4" rough sawn western red cedar
- ◆ Installed with steel c-posts driven approx. 4' into ground equivalent to an SS40.
- ◆ Installed with metal brackets (awax) that attach to post and screw into stringers
- ◆ Decorative Maxima hinges and lockable Maxima latches



#### TOP VIEW



#### SIDE VIEW



TYPE 1 RAIL